

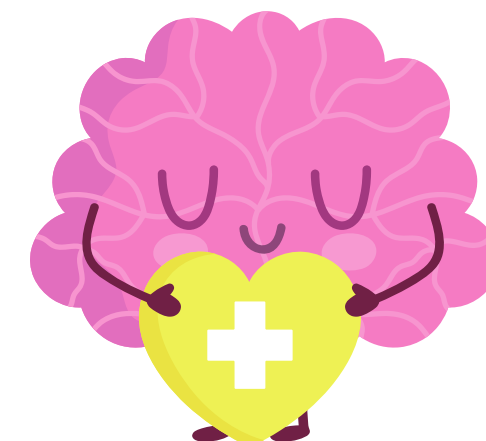
Pupil Survey 2025



Our pupil survey at Bandon Hill Primary School aims to gather feedback that helps the school understand the experiences, needs, and well-being of our children. It covers various areas to improve school life, teaching quality, and support for children. Here are some key areas our survey focusses on:

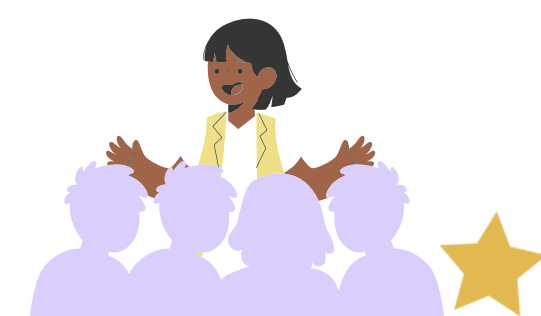
Well-being and Mental Health:

How children feel about their safety and happiness at school.
Whether they feel supported by teachers and staff.
Experiences related to bullying, friendship issues, or social challenges.



Learning and Teaching:

How children feel about the quality of teaching.
Whether the lessons are engaging and help them understand the curriculum.
Children's perceptions of their own progress and areas where they need more support.



School Environment:

The cleanliness and safety of the school.
Availability and quality of school facilities (playgrounds, classrooms, etc.).
Whether children feel comfortable and welcome at school.



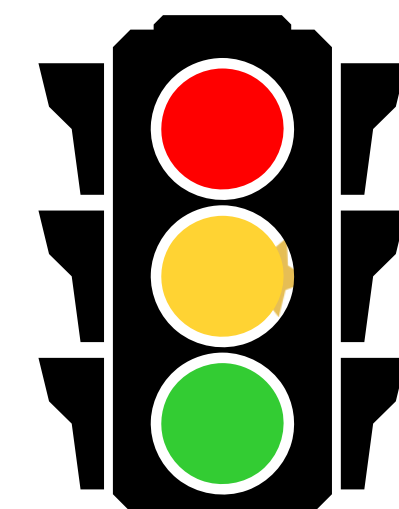
Relationships with Peers and Adults:

How children feel about their relationships with other children.
The level of support they receive from teachers and school staff.
Opportunities for teamwork and collaboration in the classroom.



School Policies and Resources:

Children's understanding of school rules and whether they feel those rules are fair.
Availability of resources like books, technology, and extracurricular activities.
Children's thoughts on school events, trips, and enrichment activities.



Diversity and Inclusion:

How children feel about diversity and inclusion in the school environment.
Whether they feel their differences (cultural, racial, etc.) are respected.
Experiences of inclusivity or any signs of exclusion.



By addressing these areas, at Bandon Hill Primary School we can use the feedback to make data-driven decisions to improve children's experiences, ensure their well-being, and enhance learning outcomes. It's also important that the survey is designed to be age-appropriate, ensuring children understand the questions and feel comfortable answering them honestly. Please continue reading to see our results from our recent survey, carried out by all children from Reception through to Year 6.

Pupil Survey 2025



Our results from this year are below, with an explanation of what we will be focussing on next to improve our school even further. Results are shown as a percentage. A positive result is shown in green, neutral in orange and negative in red.



I enjoy school

71%
24% 5%

My teachers give me work that challenges me

65%
26% 9%

My teachers help me to do my best in every lesson

84%
15% 1%

I enjoy learning at Bandon Hill

74%
21% 5%

My teachers listen to what I have to say in lessons

86%
13% 1%

There is an adult at school I can talk to if something is worrying me

75%
19% 6%

My school encourages me to treat everyone equally

84%
11% 5%

My teacher makes my lessons fun

76%
20% 4%

My school recognises and rewards individual attendance

70%
21% 9%

I enjoy my PE lessons and I have learnt new skills this year

79%
16% 5%

I am happy with the help and support I receive in school

78%
17% 5%

The behaviour of other children in my lessons is good

60%
31% 9%

I feel safe when I am at school

78%
18% 4%

I understand why my attendance in school is important

86%
9% 5%

My school encourages me to look after my health

82%
15% 3%

I take part in school activities outside of lessons (like clubs, sports, music etc)

61%
15% 24%

My teacher provides me with information about my next steps

84%
14% 2%

My school encourages me to be independent

82%
14% 4%

I feel that I make good progress in my lessons

83%
15% 4%

My school understands my needs and what I need to support me with my learning

77%
19% 4%

I know how to get help with my learning

86%
11% 3%



What are we going to do now?

1. Engage with Pupils

Share an age-appropriate summary of key findings with pupils. Hold class discussions, school assemblies, or student council meetings to gather further input. Reassure pupils that their feedback is valued and will lead to action.

2. Create a clear Action Plan

Focus on those questions where the response was not as positive as we would like it to be. Set clear priorities based on the survey findings. Develop an action plan outlining steps to improve areas of concern. Assign responsibility for each action and set deadlines.

We are going to share our action plan with Parents and carers at the start of the Summer Term. Keep an eye out on our weekly newsletters for further updates!

